



TK International
020 7794 8700
www.t-k.co.uk

Residential Sales
Residential Lettings
Property Management

Sales Office:
9 Heath Street
Hampstead
London NW3 6TP
E: sales@t-k.co.uk

Lettings Office:
16-18 Heath Street
Hampstead
London NW3 6TE
E: lettings@t-k.co.uk

tk.international
TK International
TK International

Est.
1998



Wildwood Road Hampstead Garden Suburb NW11

Set back behind a deep grass verge, located close to the huge open spaces of the Heath extension and backing directly onto one of the fairways of Hampstead Golf Club, is this delightfully characterful, surprisingly lateral and bright semi-detached five bedroom Grade II Listed family house of some 2,575 sq ft (gross) which retains many period features and benefits from a huge, wonderfully mature garden with the house sitting on a total site of approximately 0.2 acres.

Unlike many houses in the Suburb, the ground floor of this house boasts three generously sized intercommunicating reception rooms with the original Crittall doors leading on to the rear garden, kitchen/breakfast room, study (which was originally the garage), utility cupboard and guest WC.

The first floor offers a principal suite comprising double bedroom (with a birds-eye view of the wonderful garden) and large en-suite bathroom, two further double bedrooms and a family bathroom. The second floor enjoys two further bedrooms, one of which includes a dressing room & en-suite bathroom.

Whilst the house requires some updating, it is a virtually unique. A major feature of the house is the southerly facing sun-trap lawned garden which wraps itself around the property. The house also comes with off street parking for two/three cars.

£2,795,000

JOINT SOLE AGENT

Freehold

















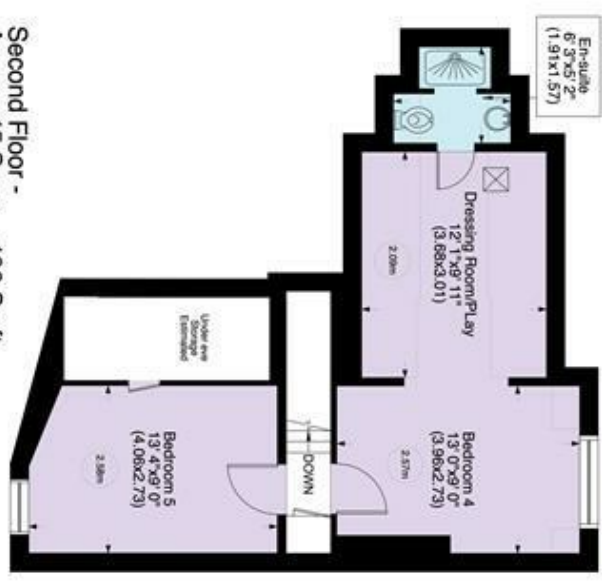
Wildwood Road NW11

Gross internal area (approx.)

239 Sq m (2575 Sq ft) Including under 1.5m
222 Sq m (2395 Sq ft) Excluding under 1.5m

Site Area (approx.)
Acre 0.2 Hectares 0.081

For identification only, Not to Scale
Produced for and copyrighted, to TK International ©



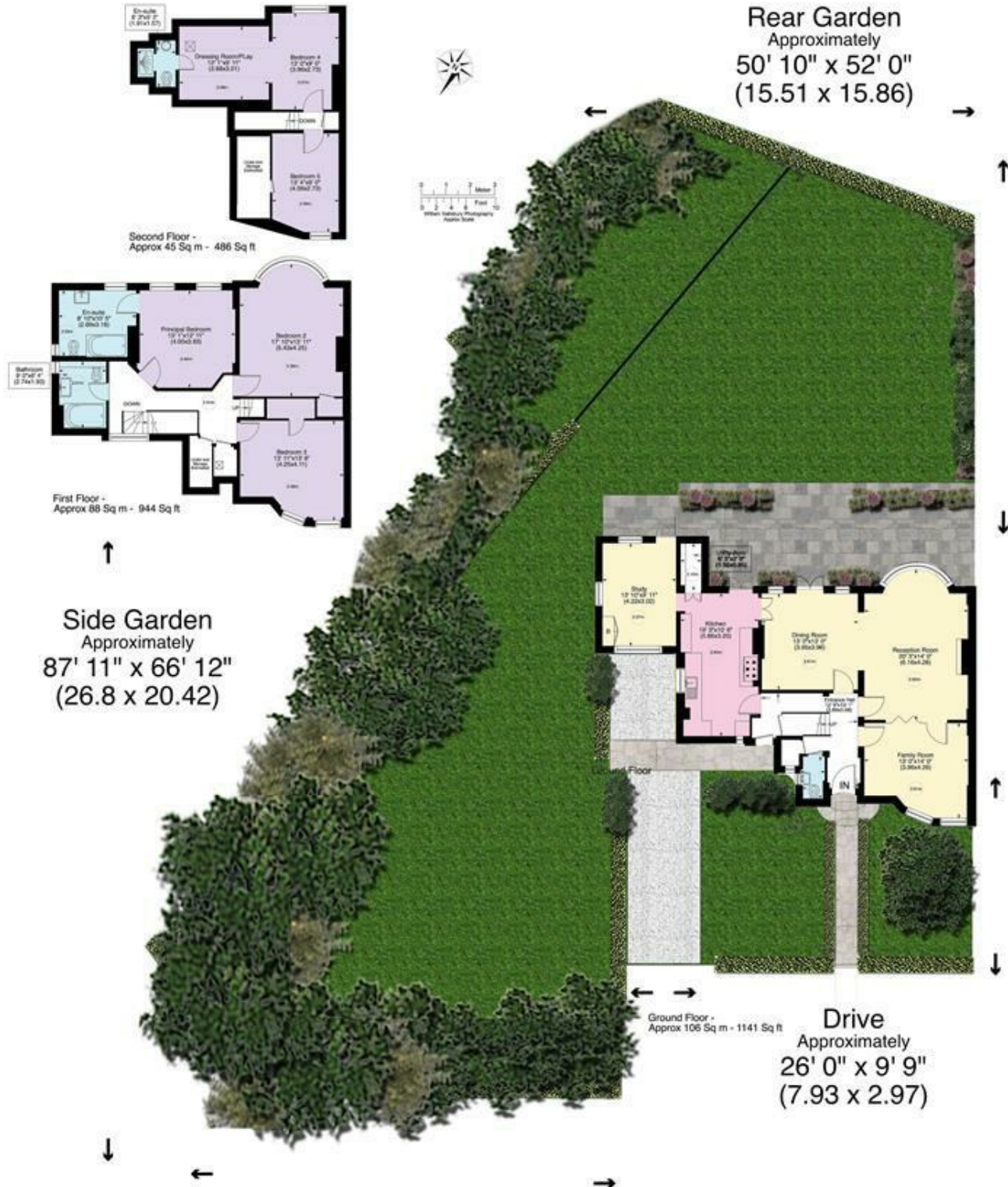
Not to Scale, for guidance only and must not be relied upon as a statement of fact. All measurements are approximate only (and have been prepared in accordance with the current edition of the RICS Code of Measuring Practice).

Wildwood Road NW11

Gross internal area (approx.)
 239 Sq m (2575 Sq ft) Including under 1.5m
 222 Sq m (2395 Sq ft) Excluding under 1.5m
 Acre 0.2 Hectares 0.081 (approx.)



For identification only, Not to Scale - Produced for and copyrighted, to TK International. ©



www.WilliamSalisbury.Photography

Not to Scale, for guidance only and must not be relied upon as a statement to fact. All measurements areas are approximate only (and have been prepared in accordance with the current edition of the RICS Code of Measuring Practice).